

2 0 0 9 . 2 0 1 0

COMPONENTS CATALOG

*Cleaning
Confidence*



The Baldewein Company

Phone: 847-455-1686

Fax: 847-455-1706

www.baldeweinco.com

info@bcoparts.com



Providing *Cleaning Confidence* since 1943

For decades the name Sani-Matic has been synonymous with *Cleaning Confidence*. As a trusted and dependable partner for our customers' unique challenges, we have solved the toughest cleaning problems, developed the most critical solutions, and continuously proven ourselves to be the leader in innovative technology and craftsmanship.

In the early 1940's, Wisconsin's growing dairy industry recognized a need for more efficient and sanitary cleaning methods. In 1943, an immersion bath washer design was developed to meet this need, and Sani-Matic was born – beginning a long

lineage of equipment at the forefront of improving and automating sanitary process cleaning for a diverse range of industries including meat and poultry, dairy, beverage, pharmaceutical, biotech, and personal care.

Today we continue this commitment to success from collaborative design and consultation to detailed manufacturing and testing processes, through start-up, servicing and preventative maintenance. We pride ourselves on being the premier partner companies choose when they want *Cleaning Confidence*.



The Baldewein Company
Phone: 847-455-1686
Fax: 847-455-1706
www.baldeweinco.com
info@bcoparts.com



2009 - 2010 Components Catalog

Table of Contents

In-line Strainers	4
Straight-Line, Angle-Line, Strainer Elements and Parts, Dual Strainer	
y-Strainers	8
Complete Assemblies and Replacement Parts	
Basket Strainers	10
Complete Assemblies and Replacement Parts	
Tee Line Strainers	12
Complete Assemblies and Replacement Parts	
Sani-Clean Strainers	13
Complete Assemblies and Replacement Parts	
Spray Balls	14
Custom and Stock Spray Balls	
Supply Tubes	16
Single and Double Ball Tee Supply Tubes	
Tanker Sprays	18
TS-4, Components and Replacement Parts	
COP Baskets	19
Custom and Standard Baskets	
Accessories	20
Carts, Port-a-Tank, Mushroom Vents, Air Eliminators, Air Vents, Hose Racks, Weld Collars, Mixer/Sparger, Flow-verter Panels, Steam Regulators, Electric Heaters and More	
Tanks	23
Custom and Standard Tanks	
System Overview	24
Sani-Matic - The Only Call to Make for all of Your Cleaning System Needs	

All prices are subject to change without notice. Sani-Matic, Inc. reserves the right to change prices at any time. Please call for the latest price information.

SANI-MATIC

P:800.356.3300 F:608.222.5348 sanimatic.com 1915 S. Stoughton Rd., Madison, WI 53716



Durable Design, Reliable Performance

Sani-Matic offers the widest variety of sizes and styles of high quality sanitary Angle-Line and Straight-Line Strainers for reliable performance. Made by our Wisconsin craftsmen, they are designed for durability and are readily available for quick delivery.

Sani-Matic strainers can use perforated or wedgewire inserts interchangeably. Perforated inserts require either disposable filter socks or wire mesh overlays for fine filtration. Wedgewire offers an effective and durable single piece insert in micron ratings equivalent to wiremesh.



Sani-Matic's standard In-Line Strainers are 3-A approved when using the perforated insert. If a 3-A approval is required, your sales representative should be consulted to ensure the configuration meets all 3-A standards.

Maximum Pressure Rating

Tri-Clamp	120 psi
Tubing	250 psi
Perforated Insert	125 psi
Wedgewire Insert	600 psi

Standard Features

- T316L stainless steel construction throughout
- Five fitting sizes available
- Standard tri-clamp connections
- EPDM tri-clamp gaskets, teflon encapsulated O-ring
- Perforated or wedgewire strainer inserts are interchangeable
- Sanitary finish (32Ra) – except wedgewire element

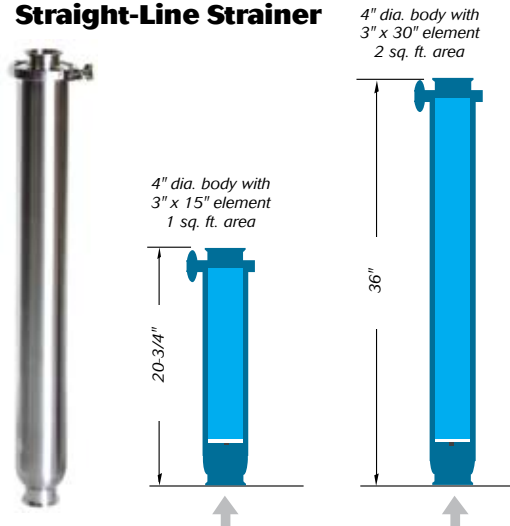
Options

- Wire mesh overlays for use with perforated insert
- Additional finishes and elastomers available
- Dual strainer installation is possible to increase capacity and provide uninterrupted processing

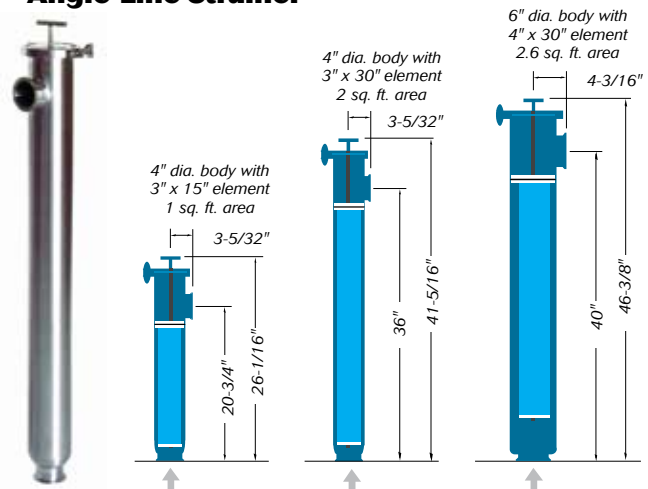
Advantages of Wedgewire

- One piece solution
- Durable, long-lasting
- Increased pressure rating
- More sanitary than wiremesh

Straight-Line Strainer



Angle-Line Strainer



Straight-Line Strainer Complete Assembly

Fitting Size	Body O.D.	Short Perforated Part #	Price	Long Perforated Part #	Price	Short Wedgewire Part #	Price	Long Wedgewire Part #	Price	Recommended Maximum GPM
1.5"	4"	S10006	\$650	S10016	\$950	S10126	\$775	S10136	\$1,250	80
2.0"	4"	S10007	\$750	S10017	\$1,050	S10127	\$875	S10137	\$1,250	120
2.5"	4"	S10008	\$850	S10018	\$1,150	S10128	\$975	S10138	\$1,350	180
3.0"	4"	S10009	\$950	S10019	\$1,250	S10129	\$1,075	S10139	\$1,450	240
4.0"	4"	S10010	\$1,150	S10020	\$1,450	S10130	\$1,275	S10140	\$1,650	300

Angle-Line End-Inlet Model Complete Assembly



Fitting Size	Body O.D	Short Perforated Part #	Price	Long Perforated Part #	Price	Short Wedgewire Part #	Price	Long Wedgewire Part #	Price	Recommended Maximum GPM
1.5"	4"	S10026	\$1,150	S10036	\$1,400	S10146	\$1,350	S10156	\$1,550	80
2.0"	4"	S10027	\$1,250	S10037	\$1,500	S10147	\$1,450	S10157	\$1,650	120
2.5"	4"	S10028	\$1,350	S10038	\$1,600	S10148	\$1,550	S10158	\$1,750	180
3.0"	4"	S10029	\$1,450	S10039	\$1,700	S10149	\$1,650	S10159	\$1,850	240
4.0"	4"	S10030	\$1,650	S10040	\$1,900	S10150	\$1,850	S10160	\$2,050	300
4.0"	6"	N/A	N/A	S10176	\$3,600	N/A	N/A	S10175	\$3,850	450

Angle-Line Side-Inlet Model Complete Assembly



Fitting Size	Body O.D	Short Perforated Part #	Price	Long Perforated Part #	Price	Short Wedgewire Part #	Price	Long Wedgewire Part #	Price	Recommended Maximum GPM
1.5"	4"	X10026	\$1,150	X10036	\$1,400	X10146	\$1,350	X10156	\$1,550	80
2.0"	4"	X10027	\$1,250	X10037	\$1,500	X10147	\$1,450	X10157	\$1,650	120
2.5"	4"	X10028	\$1,350	X10038	\$1,600	X10148	\$1,550	X10158	\$1,750	180
3.0"	4"	X10029	\$1,450	X10039	\$1,700	X10149	\$1,650	X10159	\$1,850	240
4.0"	4"	X10030	\$1,650	X10040	\$1,900	X10150	\$1,850	X10160	\$2,050	300
4.0"	6"	N/A	N/A	X10176	\$3,600	N/A	N/A	X10175	\$3,850	450

Strainer Elements

Perforated Strainer Elements

Hole Size	Body Dia.	Open Area	Short		Long & High Capacity	
			33%	Price	Part #	Price
3/32"	4"	33%	N/A	N/A	720972	\$325
1/8"	4"	40%	720584	\$225	720585	\$325
1/4"	4"	58%	720411	\$225	720412	\$325
3/32"	6"	33%	N/A	N/A	720890	\$450
1/8"	6"	40%	N/A	N/A	720799	\$450
1/4"	6"	58%	N/A	N/A	720800	\$450

1/8" Perforated Strainer Element



1/4" Perforated Strainer Element



Wedgewire Strainer Element



Mesh Overlays



Mesh Overlays

(for perforated elements of 4" O.D. strainers)

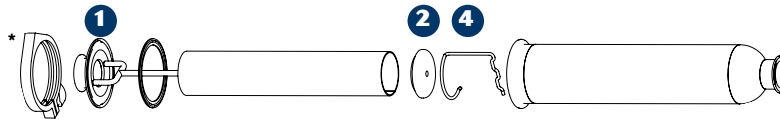
Mesh Size	Space Btwn Wires (inches)	Micron Rating	Open Area	Short		Long & High Capacity	
				Part #	Price	Part #	Price
8	call for information				\$225	029664	\$275
10	0.075	1905	56.3%	000717	\$125	000701	\$175
20	0.034	864	46.2%	000712	\$125	000702	\$175
30	0.021	533	40.8%	000713	\$125	000703	\$175
40	0.015	381	36.0%	000714	\$125	000704	\$175
50	0.011	280	30.3%	000715	\$125	000705	\$175
60	0.0092	230	30.5%	000716	\$125	000706	\$175
80	0.007	180	31.4%	000718	\$125	000708	\$175
100	0.006	140	30.3%	000711	\$125	000710	\$175
120	0.0046	117	30.5%	000720	\$225	000707	\$275
150	call for information			021276	\$225	021274	\$275
200	call for information			021275	\$125	10000048	\$175

Wedgewire Strainer Elements

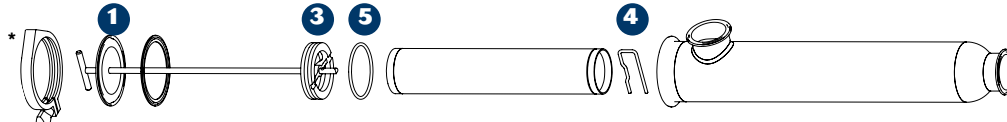
Slot Size	Body Dia.	Wire Mesh Equiv.	Micron Rating	Open Area	Short		Long & High Capacity	
					Part #	Price	Part #	Price
0.002"	4"	270	50	4.1%	700323	\$300	700334	\$425
0.005"	4"	120	125	8%	700324	\$300	700335	\$425
0.007"	4"	80	177	10%	700325	\$300	700336	\$425
0.010"	4"	60	250	14%	700326	\$300	700337	\$425
0.015"	4"	40	380	20%	700327	\$300	700338	\$425
0.020"	4"	32	500	25%	700328	\$300	700339	\$425
0.030"	4"	25	750	33%	700329	\$300	700340	\$425
0.040"	4"	17	1015	40%	700330	\$300	700341	\$425
0.050"	4"	N/A	N/A	N/A	105611	\$300	107682	\$425
0.060"	4"	10	1600	50%	700331	\$300	700342	\$425
0.1875"	4"	4	4760	75%	700333	\$300	700343	\$425
0.005"	6"	call for information			N/A	N/A	700482	\$635
0.015"	6"	call for information			N/A	N/A	700485	\$635

Internal Replacement Parts

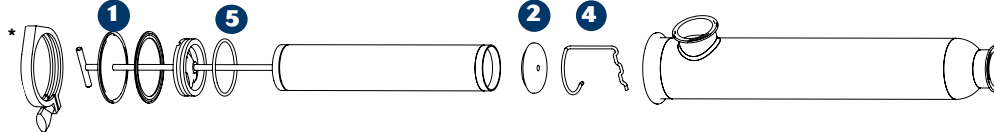
Straight-Line Strainer



Angle-Line Side-Inlet Strainer



Angle-Line End-Inlet Strainer



1 Strainer Element Retainer Inserts

Configuration	Flow	Model	Fitting	Part #	Price
Straight-Line	End-Inlet	Short	1.5"	740318	\$295
Straight-Line	End-Inlet	Short	2.0"	740325	\$315
Straight-Line	End-Inlet	Short	2.5"	740359	\$340
Straight-Line	End-Inlet	Short	3.0"	740565	\$370
Straight-Line	End-Inlet	Short	4.0"	740491	\$395
Straight-Line	End-Inlet	Long	1.5"	740422	\$310
Straight-Line	End-Inlet	Long	2.0"	740309	\$330
Straight-Line	End-Inlet	Long	2.5"	740305	\$355
Straight-Line	End-Inlet	Long	3.0"	740356	\$385
Straight-Line	End-Inlet	Long	4.0"	740368	\$410
Angle-Line	Side-Inlet	Short	N/A	740320	\$215
Angle-Line	Side-Inlet	Long	N/A	740348	\$230
Angle-Line	End-Inlet	Short	N/A	700544	\$320
Angle-Line	End-Inlet	Long	N/A	700546	\$335
Angle-Line	End-Inlet	Short (4" T/C)	N/A	700552	\$400
Angle-Line	End-Inlet	Long (4" T/C)	N/A	700549	\$415
Angle-Line	Side-Inlet	High Capacity	N/A	110123	\$500
Angle-Line	End-Inlet	High Capacity	N/A	740622	\$780



2 End Plugs

Straight-Line and
Angle-Line End-Inlet Only



Body Diameter	Material	Part #	Price
4"	Hydex	721577	\$ 55
4"	Teflon	720988	\$150
6"	Hydex	700554	\$ 95
6"	Teflon	Request	Request

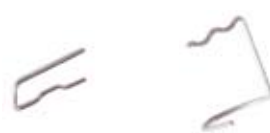
3 O-Ring Retainers

Angle-Line Side-Inlet Only



Body Diameter	Part #	Price
4"	721488	\$ 75
6"	720631	\$420

4 Retaining Clips



Side-Inlet
Clip

Straight-Line
and End-Inlet
Clip

Body Diameter	Flow	Part #	Price
4"	Side-Inlet	720408	\$20
4"	End-Inlet	740295	\$20
6"	Side-Inlet	320033	\$36
6"	End-Inlet	740623	\$36

5 O-Rings

Body Dia.	Material	Part #	Price
4"	Viton	020236	\$16
4"	EPDM	020503	\$11
4"	Teflon	024020	\$20
6"	EPDM	022416	\$11
6"	Teflon	034355	\$20

* For body clamp and elastomer replacements, please see page 9.

Conversion Kits Angle-Line Strainer

(used to reverse flow direction)

Includes: frame, O-ring retainer or end plug, clip & O-ring

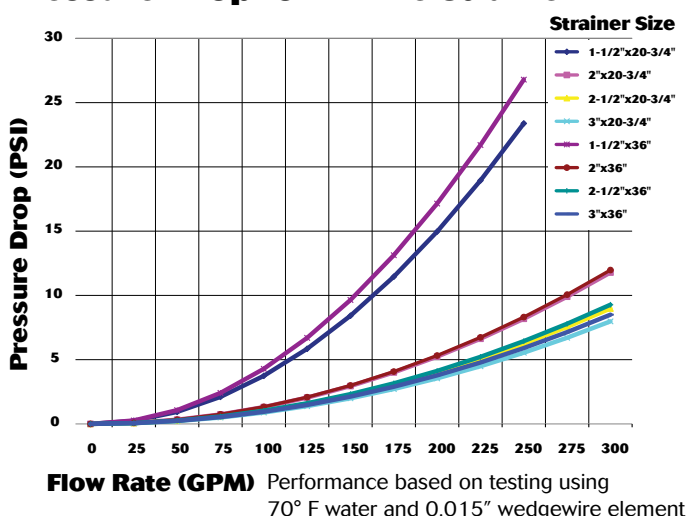
Flow	Short		Long	
	Part #	Price	Part #	Price
End to Side-Inlet	S10177	\$321	S10180	\$336
Side to End-Inlet	S10178	\$406	S10181	\$421
Side to End-Inlet (4" T/C)	S10179	\$486	S10182	\$501

Spare Parts Kit Angle-Line Strainer

Includes: nylon end plug, retainer clip,
4" T.C. gasket & four (4) frame seal O-rings

Flow	Part #	Price
End-Inlet	S25725	\$88

Pressure Drop for In-line Strainer



Mesh-Micron Reference Data

Mesh	Micron	Inches
4	4760	0.2030
8	2487	0.0970
10	1600	0.0750
14	1307	0.0510
17	1015	0.0394
20	840	0.0331
25	750	0.0280
30	590	0.0232
32	500	0.0197
40	380	0.0165
45	350	0.0138
50	297	0.0117
60	250	0.0098
70	210	0.0083
80	177	0.0070
100	149	0.0059
120	125	0.0049
140	105	0.0041
170	88	0.0035
200	74	0.0029
230	62	0.0024
270	50	0.0021
325	44	0.0017
400	37	0.0015
550	25	0.0009
800	15	0.0006
1250	10	0.0004
****	5	0.0002

Items listed in Bold are the standard Sani-Matic sizes available

Dual Strainer Assembly

A full assembly includes a strainer stand, valve kit, and two strainers - please call for quotes on full assembly pricing.

Automated backflush system with pressure sensing alarm available.

Please note: valve kits do not include a strainer.

Strainer Stand - only

304 SS; for mounting dual strainer assemblies; Valve Kits sold separately

Part #	Price
S10080	\$1,100

Valve Kit with Koltek Shutter Valves - only

316L SS; 3-way action; Kit includes:
(4) Elbows, (2) Valves, (8) Clamps,
(8) Gaskets

Size	Part #	Price
1.5"	110167	\$5,525
2.0"	110169	\$6,100
2.5"	110170	\$9,300
3.0"	110171	\$10,850

Valve Kit with VNE Butterfly Valves - only

316L SS; Kit includes:
(4) Elbows, (2) Tees,
(4) Valves, (12) Clamps,
(12) Gaskets

Size	Part #	Price
1.5"	110172	\$3,555
2.0"	110173	\$3,700
2.5"	110174	\$4,115
3.0"	110175	\$4,890
4.0"	110176	\$6,600

Alternate valves available - please call for pricing

Please note: Strainers Sold Separately



Increase Productivity and Dependability

Sani-Matic Y-Strainers produce reliable results with increased efficiency. Made in Wisconsin by our skilled craftsmen, they are built to the highest standard to deliver you optimum performance and value.



Sani-Matic's standard Y-Strainers are 3-A approved when using the perforated insert. If a 3-A approval is required, your sales representative should be consulted to ensure the configuration meets all 3-A standards.

Engineered with a close-tolerance fitment at the base of the element, Sani-Matic's Y-Strainer does not require an o-ring. Fewer parts mean faster, more effective cleaning as well as increased performance to save you time and money.

Sizing:

(max. flow rate by fitting size based on water)

1.5"	80 GPM
2.0"	120 GPM
2.5"	180 GPM
3.0"	240 GPM
4.0"	500 GPM

Standard Features

- T316L stainless steel construction throughout
- Five fitting sizes available
- Standard tri-clamp connections
- EPDM tri-clamp gaskets
- Close-tolerance fit eliminates O-ring
- Perforated or wedgewire strainer inserts are interchangeable
- Sanitary finish (32Ra) – except wedgewire element
- All welds color cleaned



Options

- Wire mesh overlays for use with perforated insert
- Dual sightglass
- Additional finishes and elastomers available

Complete Assembly - 4" Body

Assembly price includes strainer body, choice of insert, gasket & clamp

Port Size	Face-to-Face Dimension	Perforated Part #	Price	Wedgewire Part #	Price
1.5"	10"	Y10015	\$1,320	Y20015	\$1,320
2.0"	11"	Y10020	\$1,350	Y20020	\$1,350
2.5"	12"	Y10025	\$1,370	Y20025	\$1,370
3.0"	14"	Y10030	\$1,400	Y20030	\$1,400

Dual Sightglass available for an additional \$540

Perforated Sizes: 1/8" or 1/4"



Wedgewire Sizes: 0.010", 0.015", 0.020", 0.030", 0.050" & 0.060"



Complete Assembly - 6" Body

4.0"	17"	Y10040	\$1,980	Y20040	\$1,980
------	-----	--------	---------	--------	---------

Dual Sightglass available for an additional \$540

Additional Options

Wire Mesh Overlay - 4" Body		
Mesh Count	Part #	Price
10 mesh	032867	\$90
20 mesh	032868	\$90
30 mesh	032869	\$90
40 mesh	032870	\$90
50 mesh	032871	\$90
60 mesh	032872	\$90
80 mesh	032873	\$90
100 mesh	032874	\$90
120 mesh	032875	\$90

Wire Mesh Overlay - 6" Body		
Mesh Count	Part #	Price
10 mesh	032876	\$95
20 mesh	032877	\$95
30 mesh	032878	\$95
40 mesh	032879	\$95
50 mesh	032880	\$95
60 mesh	032881	\$95
80 mesh	032882	\$95
100 mesh	032883	\$95
120 mesh	032884	\$95

* Please note: Use of wire mesh overlay is NOT compliant with 3-A standards

Y-Strainer Replacement Parts

1 Strainer Elements



Perforated Insert		
For 4" Body		
Size	Part #	Price
1/8"	700226	\$350
1/4"	240959	\$350
For 6" Body		
Size	Part #	Price
1/8"	700513	\$375
1/4"	700524	\$375



Wedgewire Insert				
For 4" Body			For 6" Body	
Size	Part #	Price	Part #	Price
0.010"	700232	\$350	700504	\$375
0.015"	700164	\$350	700505	\$375
0.020"	700234	\$350	700506	\$375
0.030"	700236	\$350	700507	\$375
0.040"	700238	\$350	700508	\$375
0.060"	700240	\$350	700509	\$375

2 Clamps

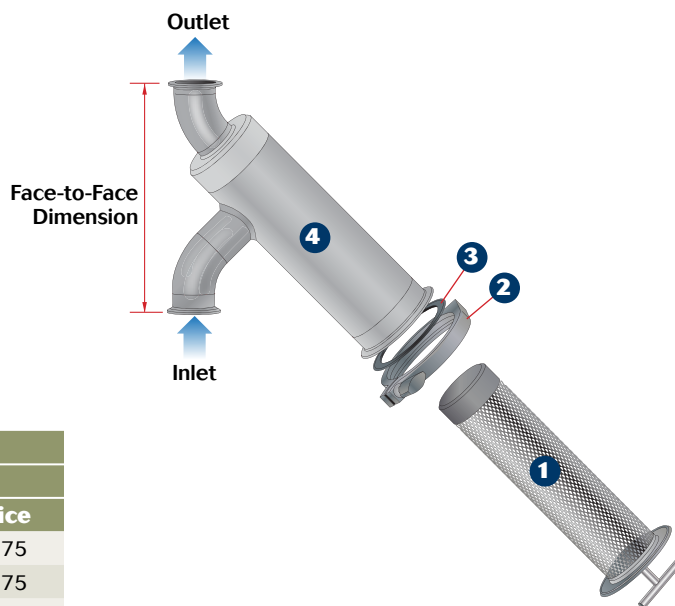


For 4" Body		For 6" Body	
Part #	Price	Part #	Price
020225	\$15.00	020976	\$41.00

3 Gasket Elastomers



Material	For 4" Body		For 6" Body	
	Part #	Price	Part #	Price
Buna	020226	\$1	020263	\$8
EPDM (std)	021031	\$2	022975	\$10
Viton	020474	\$5	023847	\$22



4 Strainer Body

Port Size	4" Body - Standard		4" Body - Sightglass	
	Part #	Price	Part #	Price
1.5"	700249	\$1,010	103786	\$1,550
2.0"	700243	\$1,040	103779	\$1,580
2.5"	700245	\$1,060	103801	\$1,600
3.0"	700247	\$1,090	103805	\$1,630
Port Size	6" Body - Standard		6" Body - Sightglass	
	Part #	Price	Part #	Price
4.0"	700471	\$1,540	103810	\$2,660

2.5" Acrylic Sightglass Replacement

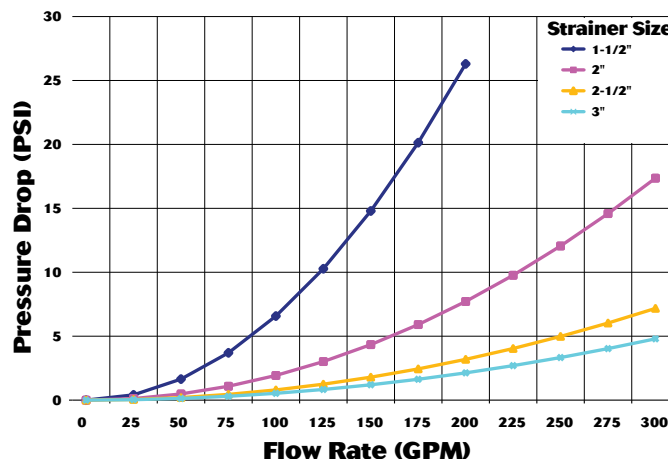
Part #	Description	Price
021351	Single replacement glass	\$60

Cv Values for Y-Strainer

		Body Size			
		1.5"	2.0"	2.5"	3.0"
Insert size	WW 0.002"	36	47	55	86
	WW 0.005"	39	70	103	109
	WW 0.010"	39	71	111	125
	WW 0.015"	39	72	112	137
	WW 0.020"	39	73	113	143
	WW 0.030"	39	73	116	152
	WW 0.040"	39	73	121	160
	WW 0.060"	39	76	125	165
	Perf. 1/8"	38	72	115	148
	Perf. 1/4"	38	75	122	159

Pressure drop for 70° F water can be calculated using the following formula: $PSID = (GPM/Cv)^2$

Pressure Drop for Y-Strainer



Performance based on testing using 70° F water and 0.015" wedgewire element

High Performance, Easy Assembly

Sani-Matic Basket Strainers are specially constructed to strain particulates out of a high volume process stream. The innovative, durable design includes a side-inlet, which allows you to easily remove the basket for cleaning without disconnecting the line.

Our Basket Strainers can be equipped with either a wedgewire or perforated basket with a woven cloth insert bag for finer straining applications. Filter bags are available in a wide variety of media types and micron sizes, and are designed for easy removal.

A3 Sani-Matic's standard Basket Strainers are 3-A approved when using the perforated insert. If a 3-A approval is required, your sales representative should be consulted to ensure the configuration meets all 3-A standards.

Standard Features

- Cast and heavy gauge T316L stainless steel construction
- The lid and hand knob closure are rated for higher pressures than clamp-style covers for improved worker safety
- Quick release hand knobs and hinged lid remain attached for convenient operation
- Machined o-ring seat prevents any fluid bypass and improves reliability
- Air relief vent valve included with complete assembly
- Rated to 100 psi maximum @ 200° F
- Available in five fitting sizes
- Choose wedgewire or perforated strainer elements

Options

- Disposable filter bags in various media types and sizes for perforated and wedgewire models with media clamp and ring
- Long and short strainer stands available

Complete Assembly with Perforated Strainer Element

(specify hole size when ordering: 1/8", 3/16" or 1/4")

Fitting Size	Part # - Short	Price	Part # - Long	Price
1.5"	S10501	\$5,815	S10505	\$6,365
2.0"	S10502	\$5,815	S10506	\$6,365
2.5"	S10503	\$5,815	S10507	\$6,365
3.0"	S10504	\$5,815	S10508	\$6,365
4.0"	S10520	\$5,815	S10509	\$6,365

Complete Assembly with Wedgewire Strainer Element

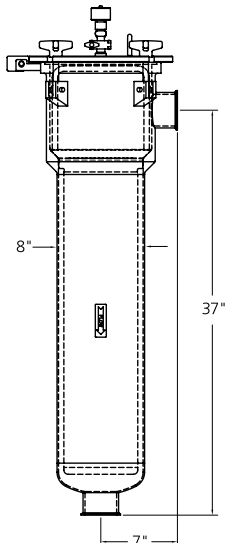
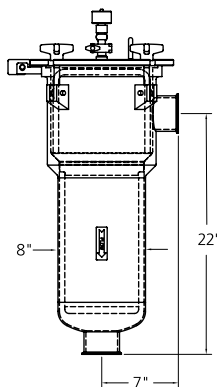
(specify hole size when ordering: 0.005", 0.015" or 0.030")

Fitting Size	Part # - Short	Price	Part # - Long	Price
1.5"	S10510	\$7,040	S10515	\$7,620
2.0"	S10511	\$7,040	S10516	\$7,620
2.5"	S10512	\$7,040	S10517	\$7,620
3.0"	S10513	\$7,040	S10518	\$7,620
4.0"	S10514	\$7,040	S10519	\$7,620



Short Model

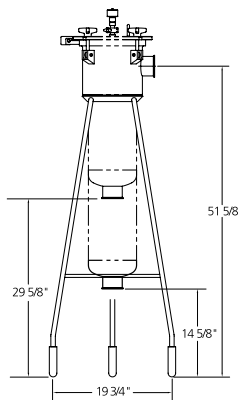
Long Model



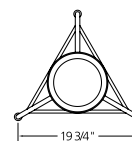
Basket Strainer Accessories

Strainer Stand

Description	Part #	Price
Long Model	741065	\$1,100
Short Model	101998	\$1,100



Side View



Top View

Air Relief Vent Valve

Part #	Price
021881	\$580

Standard on all complete assembly units.



Air relief vent valve attachment point.



Basket Strainer Replacement Parts

Strainer Elements

Description	Short Model		Long Model	
Perforated	Part #	Price	Part #	Price
1/8" Holes	741039	\$950	741052	\$1,100
3/16" Holes	741040	\$950	741053	\$1,100
1/4" Holes	741051	\$950	741054	\$1,100
Wedgewire*	Part #	Price	Part #	Price
0.005"	741022	\$2,100	741047	\$2,300
0.015"	741030	\$2,100	741048	\$2,300
0.030"	741046	\$2,100	741049	\$2,300

* Other sizes available - please call for quote

Elastomers

Cover O-Ring	Part #	Price
EPDM (standard)	021378	\$35
Viton	021144	\$70
Element O-Ring	Part #	Price
EPDM (standard)	021356	\$40
Viton	021143	\$75
Vent Valve Gasket	Part #	Price
EPDM (standard)	021037	\$1
Viton	021880	\$3

Cover O-ring and Vent Valve Gasket not pictured

Media Clamp Parts

Description	Part #	Price
Clamp Ring	641110	\$240
Locking Latch	621766	\$25



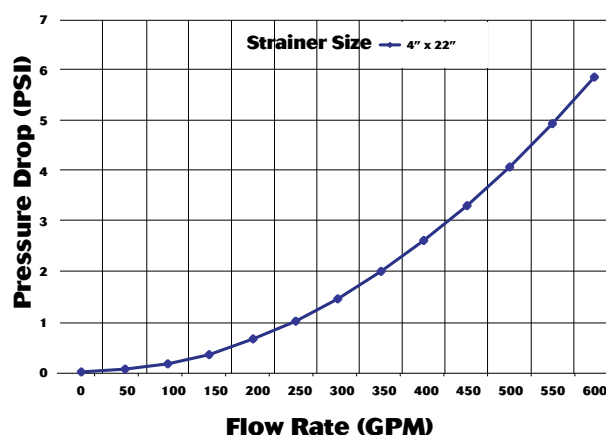
Disposable Filter Media - 50 per Box

Micron	Material	Model	Old Part #	Part #	Price per box
1	Polypropylene	Short	S10550	029244	\$295
5	Polypropylene	Short	S10552	029245	\$220
10	Polypropylene	Short	S10554	029246	\$220
25	Polypropylene	Short	S10556	029247	\$220
50	Polypropylene	Short	S10558	029237	\$220
100	Polypropylene	Short	S10560	029248	\$215
150	Nylon	Short	S10562	029249	\$415
800	Nylon	Short	S10564	029250	\$415
1500	Polyester	Short	S10566	029251	\$385
1	Polypropylene	Long	S10551	029252	\$395
5	Polypropylene	Long	S10553	029253	\$315
10	Polypropylene	Long	S10555	029254	\$315
25	Polypropylene	Long	S10557	029255	\$315
50	Polypropylene	Long	S10559	029256	\$315
100	Polypropylene	Long	S10561	029257	\$315
150	Nylon	Long	S10563	029259	\$625
250	Nylon	Long	N/A	026262	Call
300	Nylon	Long	N/A	024098	Call
800	Nylon	Long	S10565	029261	\$515
1500	Polyester	Long	S10567	029262	\$475

* All media types rated for 200° F

* Please note: Nylon has poor compatibility with some acids and chlorine

Pressure Drop for Basket Strainer



Performance based on testing using 70° F water and 4"x22" housing with 0.005" wedgewire element

Sanitary Simplicity, Sturdy Durability

Sani-Matic Tee Line Strainers are designed to economically keep materials out of your pumps and process equipment without appreciably increasing line pressure. Engineered with simplicity and durability in mind, the tri-clamp allows quick, easy removal of the insert assembly.

Manufactured in Wisconsin by experienced craftsmen, Sani-Matic Tee Line Strainers are sturdy, sanitary and CIP-able. We recommend purchasing the complete assembly – body, insert, gasket and tri-clamp – to ensure a proper fit.

Standard Features

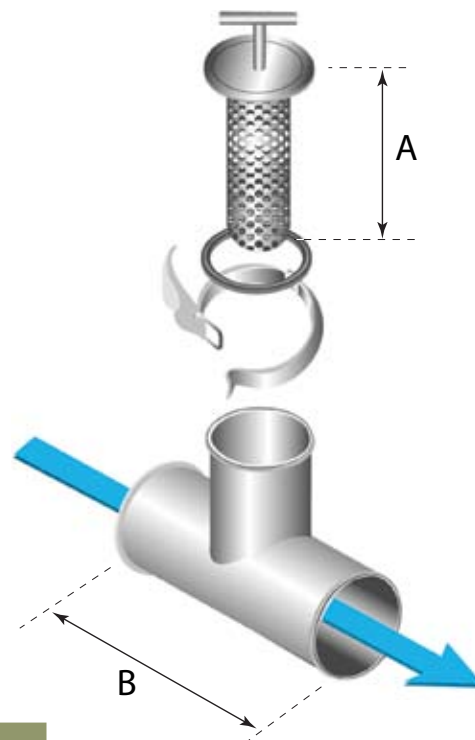
- T316L stainless steel construction
- Tri-clamp connection
- 6 fitting sizes available
- Compact design to protect pumps
- Installed at the suction of a pump in a tee

Options

- Choice of 1/4" or 1/8" perforations
- Insert alignment pin available
- Other fitting types available

Complete Assembly

Tri-clamp Fitting Size	Perforation Size	Face to Face Tee Dim. - "B"	Part #	Price
1.5"	1/8"	5.5"	740959	\$210
1.5"	1/4"	5.5"	740964	\$210
2.0"	1/8"	7.0"	740960	\$240
2.0"	1/4"	7.0"	740965	\$240
2.5"	1/8"	7.0"	740961	\$270
2.5"	1/4"	7.0"	740966	\$270
3.0"	1/8"	7.5"	740962	\$435
3.0"	1/4"	7.5"	740967	\$435
4.0"	1/8"	9.0"	740963	\$680
4.0"	1/4"	9.0"	740968	\$680
6.0"	1/8"	17.75"	110165	\$2,305
6.0"	1/4"	17.75"	110166	\$2,305



Insert Only

Tri-clamp Fitting Size	Insert Length* "A"	Face to Face Tee Dim. "B"	Perforation Size	Part #	Price
1.5"	3.50"	5.5"	1/8"	740754	\$125
1.5"	3.50"	5.5"	1/4"	740759	\$125
2.0"	4.50"	7.0"	1/8"	740755	\$145
2.0"	4.50"	7.0"	1/4"	740760	\$145
2.5"	4.75"	7.0"	1/8"	740756	\$155
2.5"	4.75"	7.0"	1/4"	740761	\$155
3.0"	5.25"	7.5"	1/8"	740757	\$210
3.0"	5.25"	7.5"	1/4"	740762	\$210
4.0"	6.50"	9.0"	1/8"	740758	\$260
4.0"	6.50"	9.0"	1/4"	740763	\$260
6.0"	17.875"	17.75"	1/8"	740991	\$455
6.0"	17.875"	17.75"	1/4"	741035	\$455

* When a tee is not supplied by Sani-Matic, the customer is responsible for supplying the proper tee to match the insert length dimension.

* Inserts DO NOT include body, gasket or clamps

In-Line Strainer Alternative

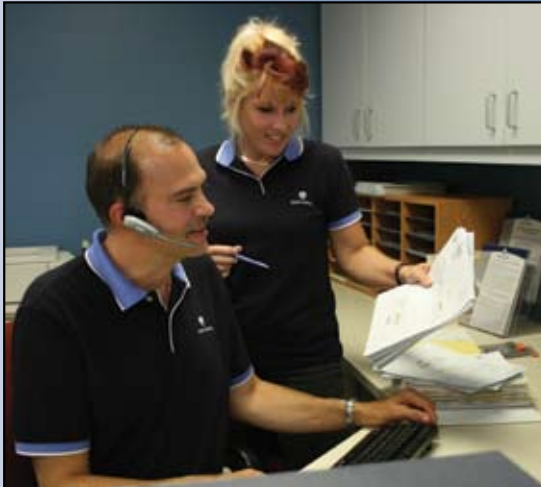
The Sani-Clean strainer is a direct replacement for a tri-clover style strainer. Constructed with T316L stainless steel, this high quality alternative gives you a choice for your in-line strainer needs.

Wire mesh overscreens with longitudinal seams fit over the heavy gauge perforated cores to ensure a consistent diameter for the full length of the cylinder. Hemmed seams are tacked in place to provide a finished smooth edge.

Call one of our knowledgeable sales associates today for pricing and availability.



Experience the Sani-Matic Difference!



Our experienced sales professionals are ready to assist you with your sanitary process cleaning accessory needs. From questions about strainers and spray balls, to inquiries about CIP tanks, to finding the right replacement part for your equipment, Sani-Matic's industry veterans are just a phone call or mouse-click away.

You may reach us by phone at

1-800-356-3300

or fax us at 608-222-5348

or find us on the web at

www.sanimatic.com



Call us today to see why Sani-Matic has been providing *Cleaning Confidence* for over 65 years!



SANI+MATIC

Spray Solutions for Your Unique Needs

Sani-Matic has decades of experience in spray technology for the Food, Beverage, and Bio-Pharmaceutical industries. We will evaluate your application needs first to design and manufacture a spray solution with appropriate flows, pressures and spray patterns to ensure efficient and dependable cleaning for your specific process equipment.



Sani-Matic is 3-A approved for its standard spray ball design when used with a wrap around clip. When considering a special spray ball, there is the possibility that the spray ball will not conform to 3-A requirements. If a 3-A approved spray ball is required, your sales representative should be consulted.

Standard Features

- T316L stainless steel
- Sanitary polished ball
- Each ball includes wrap around clip
- Standard drilling is 40 gpm @ 25 psi
- Slip-fit collar

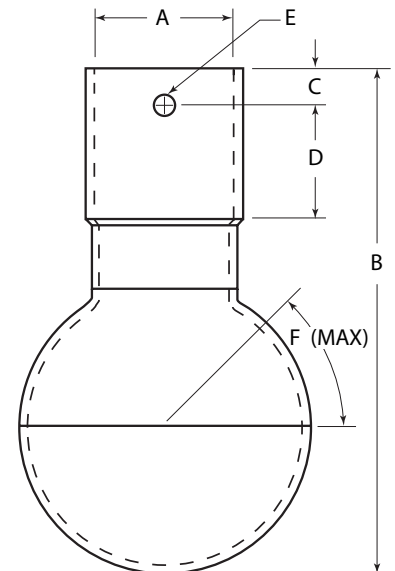
Options

- Custom drilling available (SB-3)
- Custom spray balls require 1 to 2 weeks lead time
- Material certification is available for an additional \$50 per order - please ask your sales representative for more information
- Please call for more information on orbital welding and directional drilling
- For Supply Tube options, please see Single Ball Supply Tube on page 16 or Double Ball Tee on page 17



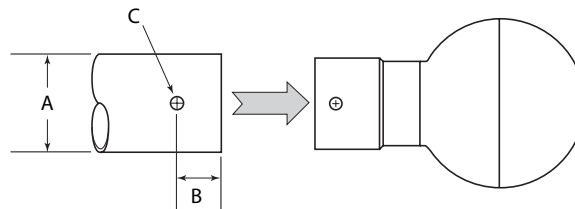
Spray Ball Dimensions

Ball Diameter	A	B	C	D	E	F
4.0"	Ø 2"	5 31/32"	7/16"	1"	Ø 13/64"	55°
	Ø 1 1/2"	5 3/4"	1/4"	3/4"	Ø 13/64"	62°
	Ø 1"	5 3/8"	3/8"	3/8"	Ø 9/64"	70°
3.0"	Ø 2"	4 13/16"	7/16"	1"	Ø 13/64"	45°
	Ø 1 1/2"	4 25/32"	1/4"	3/4"	Ø 13/64"	55°
	Ø 1"	4 11/32"	3/8"	3/8"	Ø 9/64"	67°
2.5"	Ø 1 1/2"	4 1/4"	1/4"	3/4"	Ø 13/64"	48°
	Ø 1"	3 27/32"	3/8"	3/8"	Ø 9/64"	62°
2.0"	Ø 1"	3 5/16"	3/8"	3/8"	Ø 9/64"	57°
	Ø 3/4"	3 3/32"	3/8"	1/4"	Ø 9/64"	62°
1.5"	Ø 1"	2 25/32"	3/8"	3/8"	Ø 9/64"	41°
	Ø 3/4"	2 17/32"	3/8"	1/4"	Ø 9/64"	55°
	Ø 1/2"	2 9/16"	13/32"	1/4"	Ø 5/65"	63°
1.25"	Ø 3/4"	2 1/4"	3/8"	1/4"	Ø 9/64"	45°
	Ø 1/2"	2 5/16"	13/32"	1/4"	Ø 5/64"	57°



Solution tube pin hole location for proper fit with spray ball

Tube A	Distance B	Drill Diameter C
1/2"	3/16"	5/64"
3/4"	3/16"	9/64"
1"	5/16"	9/64"
1 1/2"	11/16"	13/64"
2"	15/16"	13/64"



Stock Spray Balls



Model #	Part #	Price
SB-1-2.5-1.5-SC-40GPM-25PSI-32Ra	320036	\$219
SB-2-4.0-1.5-SC-40GPM-25PSI-32Ra	340352	\$224
SB-5-4.0-1.5-SC-40GPM-25PSI-32Ra	340012	\$244
SB-5-3.0-1.5-SC-40GPM-25PSI-32Ra	340034	\$239
SB-5-2.5-1.5-SC-40GPM-25PSI-32Ra	320058	\$239
SB-5-2.0-1.0-SC-40GPM-25PSI-32Ra	320561	\$239
SB-5-1.5-0.75-SC-40GPM-25PSI-32Ra	320665	\$217

Stock Spray Clips



Model #	Part #	Price
HAIR PIN CLIP FOR 0.50" SC *	020382	\$11
WRAP AROUND CLIP FOR 0.75" SC	321554	\$21
WRAP AROUND CLIP FOR 1.00" SC	321555	\$21
WRAP AROUND CLIP FOR 1.50" SC	321556	\$21
WRAP AROUND CLIP FOR 2.00" SC	321557	\$21

* Does not conform to 3-A standard

Custom Spray Ball Nomenclature

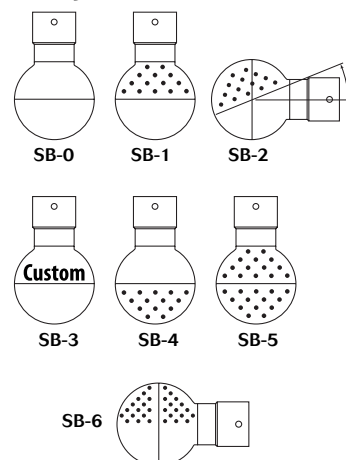
1 **2** **3** **4** **5** **6** **7** **8** = **Price**
 SB [] [] [] [] GPM PSI Ra [] = []

Selection	Option	Description	Price
1 Drill Pattern	0	No holes	\$149
	1	180° Up - Vertical Mount	\$169
	2	180° Up - Double Ball (each ball)	\$169
	3	Special Spray Pattern (diagram req'd)	\$209
	4	180° Down - Vertical Mount	\$169
	5	360° Full Coverage	\$189
	6	180° Up - Horizontal Mount	\$169
2 Ball Diameter	1.25	1.25"	\$20
	1.5	1.50"	\$20
	2.0	2.00"	\$35
	2.5	2.50"	\$35
	3.0	3.00"	\$35
	4.0	4.00"	\$40
3 Connection Size	0.50"	0.50" *	\$8
	0.75"	0.75"	\$8
	1.00"	1.00"	\$15
	1.50"	1.50"	\$15
	2.00"	2.00"	\$20
	2.50"	2.50"	\$20
4 Connection Style	SC	Slip Collar (standard)	\$0
	BW	Butt Weld	\$0
	FL	Flare (no connection)	-\$10
	TC	Tri-Clamp	\$20
	HC	Half Coupling*	\$30
5 Flow (GPM) **Max Flow Rate chart	40	40 GPM (standard)	\$0
	0	0 GPM (no holes)	\$0
	Custom	Enter GPM (maximum 400 GPM)	\$40
6 Pressure (PSI)	25	25 PSI (standard)	\$0
	0	0 PSI (no holes)	\$0
	Custom	Enter PSI (maximum 70 PSI)	\$0
7 Finish (Ra)	32	32 Ra/150 Grit (standard)	\$0
	25	25 Ra/180 Grit	\$70
	15-20	15-20 Ra/240 Grit	\$90
	9-11	9-11 Ra/320 Grit	\$120
8 Finish Option (EP)	EP	Electropolish (added to any finish)	\$120

* Does not conform to 3-A standard

Material certification is available for an additional \$50 per order. Please ask your sales representative for more information.

Spray Ball Drill Pattern



Connection Size	Maximum Flow
0.50"	12 GPM
0.75"	25 GPM
1.00"	40 GPM
1.50"	100 GPM
2.00"	240 GPM
2.50"	400 GPM

Calculate recommended minimum flow rate for cleaning of vertical process vessels

Enter tank diameter (D) in feet = _____
 Spray Ball GPM = _____
 (9.5 x tank diameter in feet)

A minimum flow rate of 3 gallons/minute-foot (tank circumference) is required to produce turbulent flow of solution down vessel walls.

Place Your Spray Ball in the Perfect Location for Maximum Cleaning



Sani-Matic is 3-A approved for its standard supply tube design. When considering a different supply tube, there is the possibility that it will not conform to 3-A requirements. If a 3-A approval is required, your sales representative should be consulted.

Features and Special Notes

- T316L stainless steel
- Custom supply tubes require 1 to 2 weeks lead time
- Material Certification is an additional \$50 per order – please ask your sales representative for more information
- For Spray Ball options, please see Spray Balls on pages 14 and 15

Supply Tubes

Custom Supply Tube Nomenclature

ST
1
2
3
4
5
6
7
8
Ra
EP
=
Price

Selection	Option	Description	Price
1 Tube Diameter	0.5	0.50"	\$ 90
	0.75	0.75"	\$ 90
	1.0	1.00"	\$100
	1.5*	1.50"	\$100
	2.0	2.00"	\$125
	2.5	2.50"	\$150
	3.0	3.00"	\$175
2 Tank Connection	0	none	\$ 0
	1.5	1.50" End Cap Tri-Clamp	\$210
	2.0	2.00" End Cap Tri-Clamp	\$215
	2.5	2.50" End Cap Tri-Clamp	\$215
	3.0	3.00" End Cap Tri-Clamp	\$220
	4.0	4.00" End Cap Tri-Clamp	\$230
	6.0	6.00" End Cap Tri-Clamp	\$300
3 Internal Connection	SC	Slip Collar (standard)	\$ 0
	BW	Butt Weld	\$ 0
	TC	Tri-Clamp	\$ 20
	HC	Half Coupling*	\$ 30
4 External Connection	TC	Tri-Clamp Ferrule (standard)	\$ 20
	BW	Butt Weld	\$ 0
	SC	Slip Collar	\$ 20
	HC	Half Coupling*	\$ 30

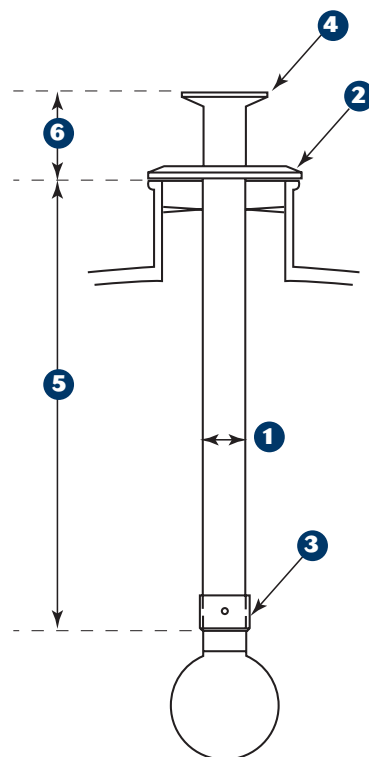
Note: Use internal length ONLY if (2) Tank Connection = 0 (none)

5 Internal Length	(enter Length in inches)	\$ 1 per inch
--------------------------	--------------------------	---------------

Note: Use external length ONLY if (2) Tank Connection = 0 (none)

6 External Length	(enter Length in inches)	\$ 1 per inch
--------------------------	--------------------------	---------------

7 Finish (Ra)	32	32 Ra/150 Grit (standard)	\$ 0
	25	25 Ra/180 Grit	\$ 70
	15-20	15-20 Ra/240 Grit	\$ 90
	9-11	9-11 RA/320 Grit	\$120
8 Finish Option (EP)	EP	Electropolish (added to any finish)	\$120



Material Certification is available for an additional \$50 per order. Please ask your sales representative for more information.

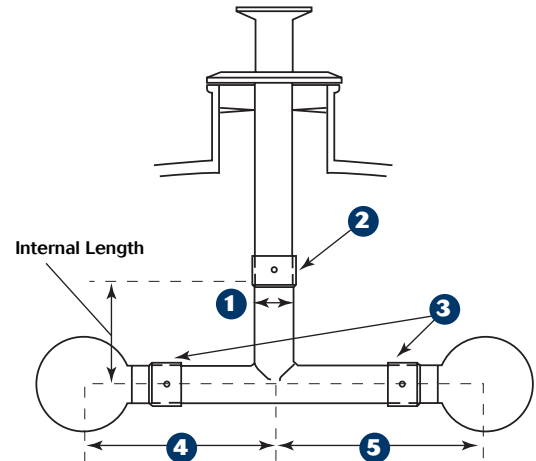
* Does not conform to 3-A standard

Double Ball Tee

Custom Double Ball Tee Nomenclature

1 2 3 4 5 6 7 **Price**
 DT [] [] [] [] [] [] Ra EP = []

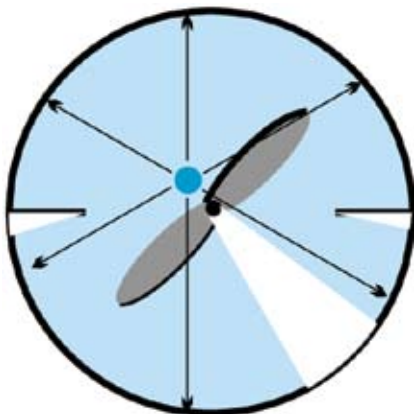
Selection	Option	Description	Price	Tube Diameter (selection 1)	Standard Internal Length
1 Tube Diameter	0.75	0.75"	\$265	0.75"	0.84" or 27/32"
	1.0	1.00"	\$265	1.0"	1.69" or 1 11/16"
	1.5	1.50"	\$265	1.5"	2.41" or 2 13/32"
	2.0	2.00"	\$295	2.0"	2.66" or 2 5/32"
2 Connection	SC	Slip Collar (standard)	\$0		
	BW	Butt Weld	\$0		
	TC	Tri-Clamp	\$20		
3 Ball Connection	SC	Slip Collar (standard)	\$20		
	BW	Butt Weld	\$0		
4 Leg Length	(enter Length in inches)		\$ 1 per inch		
5 Leg Length	(enter Length in inches)		\$ 1 per inch		
6 Finish (Ra)	32	32 Ra/150 Grit (standard)	\$0		
	25	25 Ra/180 Grit	\$70		
	15-20	15-20 Ra/240 Grit	\$100		
	9-11	9-11 Ra/320 Grit	\$125		
7 Finish Option (EP)	EP	Electropolish (added to any finish)	\$120		



Material Certification is available for an additional \$50 per order. Please ask your sales representative for more information.

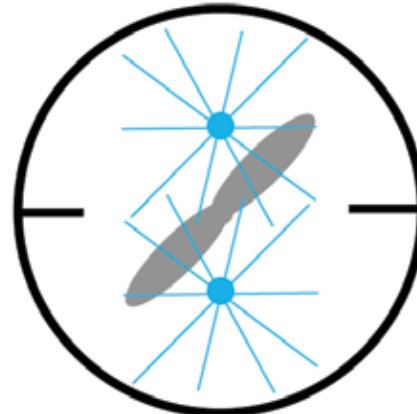
Single Ball Supply Tube vs. Double Ball Tee Attachment

A properly sized single spray ball with the correct spray pattern provides the necessary cleaning coverage for many tanks. However, for tanks with baffles or agitators, a "shadowing" effect occurs within the tank. The diagrams below show how a double ball tee attachment overcomes this problem to provide complete cleaning coverage. Your sales associate can assist you with the proper selection.



Shadowing

This top view of a tank with baffles and agitator shows the "shadowing" of spray due to obstructions within the tank.



Double Ball Placement

Multiple spray sources are needed to compensate for the shadowing effect to provide complete spray coverage.

Drop-In Tanker Spray Wash Options



Tapered Manway Assembly

For use with "rotating" spray heads. Used in applications where high impingement cleaning is required to remove heavy product residue.

Part #	Price
360115	\$2,205



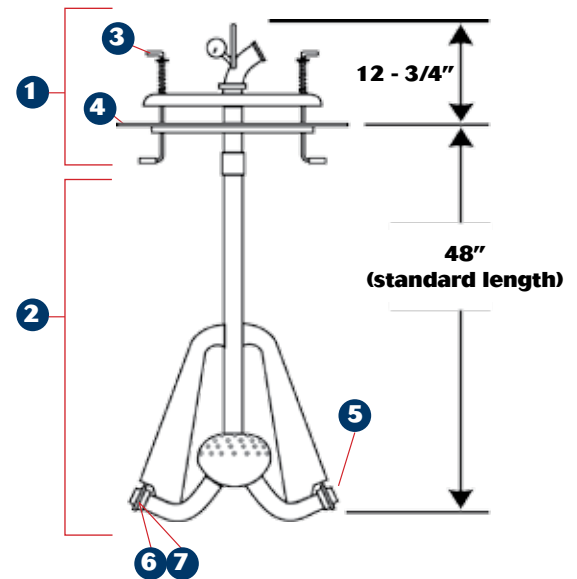
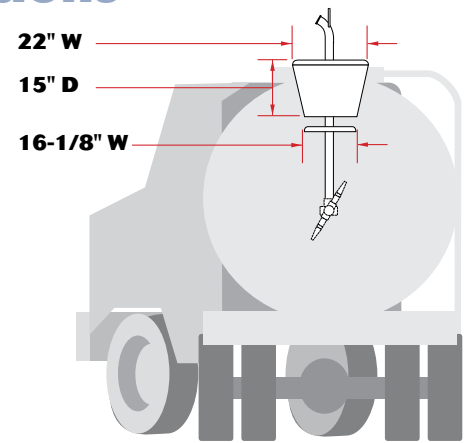
Model TS-4

Drop-in style washer for up to 44' tanker. TS-4 features a center spray ball for top spray pattern and two multi-bore jet nozzles for tank end washing. The vented manhole cover has a bail handle and two hold downs with gasket. For 20' to 44' tankers. 120 gpm @ 55 psi

Part #	Price
S10090 (complete assembly)	\$2,289

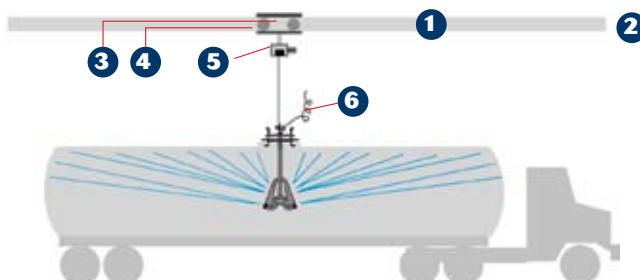
TS-4 Replacement Parts List

	Description	Part #	Price
1	Top only	360004	\$887
2	Bottom only	360075	\$1,407
3	Arm/Spring Assy (set of 2)	S10093	\$173
4	Manway Gasket	320053	\$76
5	Nozzle	321793	\$81
6	Nozzle Gasket	020455	\$7
7	Nozzle Clamp	020473	\$30



Optional Equipment for TS-4 Handling

	Item	Description	Part #	Price
1	Rail	4" I-beam, hanger, prime coated	000522	\$35/foot
2	Turns	90° / 48°radius bend, prime coated	S18780	\$814
3	Carrier	Rolling carrier, adjustable I-Beam fit	020231	\$185
4	Balancer	70 JA (operate @ 55 - 65lbs.)	020767	\$1,558
5	Electric Hoist	1/6 HP, 300lb capacity	030901	\$900
5	Electric Hoist	1/6 HP, 500lb capacity	029602	\$1,213
6	CIP Hose	SW-330 (2 1/2") for suction hose	021128	\$1,120
6	CIP Hose	SW-330 (2") for discharge hose	032757	\$842



Custom COP Baskets

From specialized handles and lids to multiple dividers and feet, Sani-Matic COP Baskets are designed to meet your specific cleaning needs. Custom sizing is available in addition to various polishes and finishes. Please call one of our sales representatives for more information and pricing.



Standard COP Baskets

Sani-Matic COP Baskets allow workers to handle valuable components with ease and safety. These baskets allow for thorough cleaning while reducing damage and lost parts.

Basket	Description	Dimensions (L x W x D)	Opening Size	Handles (O.A.H)	Material and Finish	Part #	Price
URWB-1	Small parts basket	19" x 15" x 3.5"	3/8" perf.	17"	316L, bead-blast	460030	\$255
URWB-2	Fittings basket	19.75" x 15" x 4"	1" square	15"	316L, electropolish	020132	\$155
URWB-3 (not pictured)	Partitioned (3) Basket	19.75" x 15" x 4"	1" square	15"	316L, electropolish	440026	\$225
URWB-4 (not pictured)	Partitioned (4) Basket	19.75" x 15" x 4"	1" square	15"	316L, electropolish	440027	\$250
URWB-5	Gasket Basket	12" x 6" x 10"	3/16" perf.	hanger style	316L, electropolish	020139	\$225
URWB-6	Valve Basket	22" x 10.5" x 10"	1" square	24"	316L, electropolish	020136	\$190
URWB-7	XL Parts Basket	22" x 22" x 18"	7/8" square	24"	316L, electropolish	440021	\$415



URWB-1



URWB-2



URWB-5



URWB-6



URWB-7

A Variety of Accessories, For a Variety of Needs

From parts handling equipment designed to carry, transfer and store parts to components to complete your CIP installation, Sani-Matic offers a wide variety of standard and custom items.

Table Cart – Model 133

This light-duty, portable table is intended for holding disassembled parts and/or baskets with these parts.

Material: T304 stainless steel, 14 gauge

Dimensions: 34"L x 22"W x 32"H

Part #	Price
460006	\$995



Table Cart – Model 133

Port-a-Tank – Model 138

The Model 138 is a portable 25 gallon wash tank.

Material: T304 stainless steel, 22 gauge

Tank Dimensions: 29"L x 18"W x 13.5"D

Overall Dimensions: 33"L x 30.5"W x 34.25"H

Description	Part #	Price
With bottom tray, back tray and casters (pictured)	480007	\$1145
Without back tray (deduct from standard price)	460077	-\$111



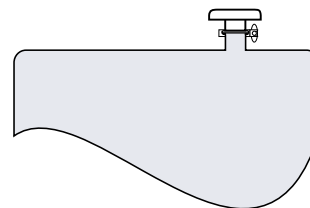
Port-a-Tank – Model 138

Mushroom-Style Air Vent

These vents are constructed with a solid radiused and panned top. The underside portion is constructed with 1/8" perforated material. The vents may be installed on CIP tanks to prevent extraneous material from entering the tank.

Material: 316L stainless steel

Description	Part#	Price
1.5" Tri-Clamp	740828	\$220
2.0" Tri-Clamp	740829	\$250
2.5" Tri-Clamp	740830	\$406
3.0" Tri-Clamp	740831	\$411
4.0" Tri-Clamp	740832	\$426



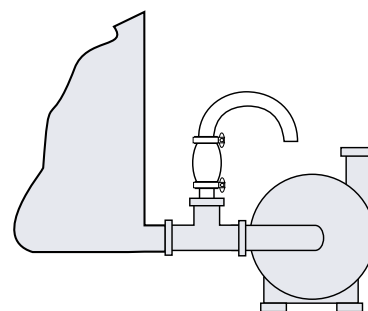
Sanitary Air Eliminator

The air eliminator is installed at the suction of a CIP return pump. The purpose is to remove air from CIP return solution and prevent air lock in a centrifugal pump. If the pump is used during processing to transfer product, the air eliminator is usually removed and the port is capped.

Material: T304 and T316 stainless steel

Size	304 Stainless Steel		316 Stainless Steel	
	Part #	Price	Part #	Price
1.5"	740562	\$302	740636	\$510
2.0"	740559	\$307	740637	\$515
2.5"	740635	\$338	740638	\$546
3.0"	740561	\$354	740639	\$567
4.0"	740569	\$369	740640	\$603

Replacement Parts	Part #	Price
1" Gasket	020388	\$2
Plastic Ball (1.25")	020280	\$11



CIP Return Pump Air Vent

The return pump air vent is installed to expel air. This avoids cavitation and air lock that can cause wash program disruption. Ball valve shut-off available, please call for pricing.

Material: T304 stainless steel, 1/4" I.P. thread

Part #	Price
720001	\$206



Hose Racks

Stainless steel hose racks provide a convenient way to store hoses at cleaning stations and COP tanks. They are available in two styles.

Model #	Description	Part #	Price
201A	5" x 12" backing plate	740017	\$140
201B	mounting holes at each end	740684	\$83



Model 201A



Model 201B

Flared Weld Collar

These collars are used for installing piping through tank tops and sidewalls. They are to be welded and ground at the pipe and tank contact points.

Material: T304 stainless steel

OD Tubing	Part #	Price
1.5"	720008	\$19
2.0"	720009	\$19
2.5"	720010	\$21
3.0"	720085	\$21
4.0"	720086	\$23



In-Tank Steam Mixer/Sparger

The purpose of a steam mixer/sparger is to effectively mix steam with water in the tank to reduce noise and maximize the heating capacity. Steam mixers/spargers are attached to either in-tank piping or a coupling that is mounted through the sidewall of a tank.

Sizing is determined by the steam valve through which steam is delivered.

Material: T316 stainless steel

Connection type: NPT threaded connection

Connection Size	Part #	Price
0.5"	741162	\$325
0.75"	740859	\$325
1.0"	741137	\$325
1.25"	640842	\$325
1.5"	540042	\$325



Steam Regulator Valve

The steam regulator automatically controls the temperature of your cleaning unit without the use of external power. With a vapor pressure thermal system, the steam regulator senses temperature change and positions the valve plug to regulate the heating or cooling medium to maintain a desired temperature.

Material: T316L stainless steel

Connections: NPTF

Connection Size	Part #	Price
0.5"	020494	\$900
0.75"	020495	\$1,000
1.0"	020506	\$1,168



Thermowell for Steam Regulator Thermal Bulb (not pictured)

Material: T321 stainless steel, 10.5" long, 1.0 NPTM

Part #	Price
120002	\$95

Electric Immersion Heater

Manual Thermostat, 3" Tri-Clamp,
Nema 4x Head, 50° - 250°F, 460 VAC

Connection Size	Part #	Price
7.5 KW	023997	\$1,597
9.0 KW	029529	\$1,607
12.0 KW	024296	\$1,617

Additional voltages and sizes available upon request



Flow-Verter Panels

Reduce piping and valve costs by creating multi-port flow selector stations with a Sani-Matic flow-verter panel. Model FS-1 is made with 1/4" stainless steel and has no flanges. Model FS-2 is made with 10 gauge stainless steel and has flanged plates. Three styles are available for each: round, rectangular and square. Please call a Sani-Matic sales associate for custom pricing.



Custom and Standard Tanks for your CIP System

Turn to Sani-Matic for quick delivery of your industry compliant tanks. With a variety of standard and custom features, Sani-Matic tanks and vessels can be specified to meet your facility's needs conveniently and efficiently.

Tanks and Vessels available:

CIP, Process, Holding, Surge, Mixing, Horizontal, Vertical, Square, Atmospheric, ASME, 3-A



Standard Features

- T304 or T316L stainless steel
- Smooth-radius corners
- All-welded assembly
- Heavy duty T304 stainless steel tubular legs
- Sizes up to approximately 2,500 gallons
- Various finishes to choose
 - Surfaces: 2B or #4
 - Interior welds: color clean or grind and polish
 - Exterior welds: color clean with stripe blast bottom, grind and polished with stripe blast bottom, or grind and polish
 - Special surfaces and finishes are available by request
- Feet choices
 - No feet
 - Adjustable ball feet
 - Adjustable square pads with bolt holes
 - Heavy duty stainless steel casters
- Covers available for open top tanks
 - Single lift-off
 - Split-top, hinged
 - Split-top, hinged with half welded to tank
- Gasketed and non-gasketed manway
- Anti-siphon for water inlet
- Sidewall overflow (standard) or Center Skimmer overflow

Options

- Insulated sidewall (2" Inswool with stainless steel cladding)
- Anti-vortex device
- Spray devices and supply tubes
- Tri-clamp type port sizes
 - 1", 1.5", 2", 2.5", 3", 4"
- No foam inlet
- Vent – mushroom or gooseneck styles



Quality Control Options

In order to meet the needs of the customer, SMI performs the following procedures based solely on the requirements of each job.

- Drainage Testing
- Electro-Polishing
- Passivation
- Riboflavin Testing
- Ra Readings for Polished Finishes
- Sprayball Testing with PSI and GPM Rates
- De-Ionized Water Rinsing
- Hydro-Testing to ASME Requirements
- Liquid Penetrant Testing

**Please call today
for custom tank pricing.**

Providing *Cleaning Confidence*

Each system design strives to minimize cycle time, lower chemical usage, reduce water and utility costs, and promote worker safety. With thousands of Sani-Matic washers in operation around the world, we're proud to be the premier provider of *Cleaning Confidence* for the Dairy, Beverage, Meat, Poultry, Pharmaceutical, Bio-Tech and Personal Care industries.



CIP Systems (Clean-In-Place)

Sani-Matic Clean-In-Place (CIP) Systems are custom designed and manufactured to ensure efficient, automatic cleaning of process lines, tanks and vessels. Each CIP System is sized to provide the appropriate amount of flow and pressure to thoroughly remove product residue and rinse effectively. Our in-house programmers and UL approved panel shop will develop controls that optimize your cleaning cycle and integrate the CIP function smoothly into your production system.

Sani-Matic Clean-In-Place (CIP) Systems can be portable or stationary: single-tank, two-tank or multi-tank; single-use, re-use or once through; as well as designed for multi-circuit capabilities.



COP Washers (Clean-Out-of-Place)

Sani-Matic Clean-Out-of-Place (COP) Immersion Parts Washers were the first on the market and continue to set the standard for the industry. Each is custom designed and manufactured to provide a faster and more consistent alternative to manual cleaning methods. Our COP Washer comes with exclusively-designed sanitary jet manifolds, which are fully welded and machined to eliminate unsanitary crevices and create consistent, high-velocity turbulence. This continuous agitation effectively removes residue from piping, hoses and a wide variety of machine parts. These can be organized into custom baskets, allowing workers to easily and safely handle expensive components minimally while avoiding direct contact with hot water and high chemical concentrations.

Sani-Matic Clean-Out-of-Place (COP) Immersion Parts Washers can be portable or stationary: single or multi-compartment; and are available with a variety of options, controls and valve configurations including CIP capability.



Cabinet Washers

Sani-Matic offers a variety of Cabinet Washers that are custom designed and manufactured to ensure efficient, automated batch cleaning processes. Each Cabinet Washer comes with our exclusively designed sanitary spray assemblies that move to distribute cleaning solution evenly throughout the washer. These oscillating high-impact manifolds efficiently remove difficult residues from both interior and exterior product contact surfaces while the PLC controls the cleaning cycle to ensure a consistent and easy to validate process.

Sani-Matic Cabinet Washers can be a standard or custom size; are easy to install, program and operate; and reduce component handling.

dence for over 65 years

Tunnel Washers

Sani-Matic Tunnel Washers are custom designed and manufactured to efficiently and continuously clean large quantities of items such as totes, trays and pallets in a continuous process. Hard to clean manually, these items can be easily conveyed through rinse and detergent zones positioned with high impact adjustable nozzles — ensuring all residue is removed effectively with complete spray coverage. Each Tunnel Washer is designed to meet maximum target capacity, and adjustable guides or multi-lane capabilities allow different size items to be cleaned simultaneously.

Sani-Matic Tunnel Washers can include additional pre-rinse, recirculation or drying zones, as well as automated loading and unloading systems to integrate a complete material handling system.



Boosted Pressure Systems

Sani-Matic's Central High Pressure sanitation system will meet the challenge of minimizing your water use and waste while sanitizing your facility and process equipment. You will experience significant savings in resources, labor and overall production costs. Sani-Matic engineers will evaluate your current cleaning needs and plant layout to design a custom sanitation system that will no doubt improve your bottom line.

Sani-Matic's Impact RFS System delivers high impact, not just high pressure. Too much pressure leads to ineffective cleaning and too much pressure can damage equipment and create aerosols that may recontaminate surfaces. The Impact RFS allows you control the pressure of the rinsing, foaming and sanitizing to achieve maximum efficiency and effectiveness.



Service and Spare Parts

Sani-Matic has been a trusted name in sanitary process cleaning for over 65 years. This commitment to our customers' success is founded on the superior craftsmanship, dependability and integrity provided by our employees. From the initial inquiry to one of our friendly sales staff, to working with our talented engineers and designers to find the most effective solution, through testing and start-up with our knowledgeable field service reps, it is the service provided by our people that set us apart.

Sani-Matic's service does not end once your equipment is up and running. We offer a complete line of components and spare parts to ensure that you continue to clean with confidence efficiently and effectively in the years to come.



Call us today to experience the Sani-Matic difference!

Conversion Factors

Pressure

Feet of Water	x	0.433	=	PSI
Inches Hg.	x	0.491	=	PSI
Atmosphere	x	14.7	=	PSI
Meters of Water	x	1.42	=	PSI
Kilograms per Centimeter ²	x	14.22	=	PSI
Atmosphere	x	33.9	=	Feet of Water
PSI	x	2.31	=	Feet of Water
Inches Hg.	x	1.13	=	Feet of Water

Flow

Lbs. of Water per Hour	x	0.002	=	GPM
Lbs. of Fluid per Hour / Specific Gravity	x	0.002	=	GPM
Meter ³ per hour	x	4.4	=	GPM
Liters per minute	x	0.264	=	GPM
GPM	x	3.785	=	Liters per minute

Volume

Liter	x	0.264	=	Gallon
Feet ³	x	7.48	=	Gallon
Lbs. of Water	x	0.119	=	Gallon
Imperial Gallon (British)	x	1.2	=	Gallon (U.S.)
U.S. Gallon	x	3.785	=	Liter

Viscosity

Centipoise/Specific Gravity	=	Centistokes
Centistokes	x 4.64	= SSU (approx.)

Viscosity and Specific Gravity Table for Various Foods

Product	Condition	Specific Gravity	Viscosity
Butter		0.93 to 0.98	15,000 SSU @ 55°F
			440 SSU @ 90°F
			220 SSU @ 115°F
Catsup	varies	1.13	2,300 to 6,100 SSU @ 190°F
Cream	60°F - 30% Fat	1.00	73 SSU
	60°F - 40% Fat	0.99	140 SSU
	60°F - 45% Fat	0.99	215 SSU
Egg Yolk		1.12	21,500 SSU @ 35°F
Honey	81.2° Brix (standard)	1.30	1,250 to 1,425 SSU @ 100°F
Maple Syrup		1.37	2,000 SSU @ 68°F
Margarine		0.93 (approx.)	13,900 SSU @ 84°F
Peanut Butter		1.20	31 SSU @ 68°F
Water		1.00	77,400 SSU @ 85°F
Whey (condensed)	60% Total Solids	1.24	9,300 SSU @ 45°F
	50% Total Solids	1.20	2,300 SSU @ 131°F
	50% Total Solids	1.20	3,100 SSU @ 65°F
	27% Total Solids	1.11	75 SSU @ 100°F

** Please note: viscosities may vary depending on products, formulas and the process used **

1915 S. Stoughton Rd.
Madison, WI 53716

Strainers

Spray Balls

Supply Tubes

Tanker Sprays

Baskets

Accessories

Tanks



SANI+MATIC